

Activity

Theme (3) : How the world works.

Chapter (1 – 2)

A) Choose the correct answer:

- 1- Bolivian Plateau is formed by the (wind- water).**
- 2- Sand Dunes are formed by the (wind- water).**
- 3- Colored Canyon in Sinai is formed by the
(wind- water).**
- 4- (Geography – Erosion) is the study of land, water,
and air around us.**
- 5-(Tourism- Agriculture) is the name of the
profession that helps people when they travel.**
- 6- The erosion is (man-made - natural) change.**
- 7- The thermometer moves very (slow – fast) when
the weather is very windy.**

8- We use the map (legend- scale) to measure the distance from one city to another.

9- (Cotton – Steel) is used to build machines, cars, buildings, and bridges.

10- The Nubian village is in (Aswan – Luxor).

11- The Roman theatre is in (Giza - Alexandria).

12- Something that is (economy – unique) is unusual or different from other things.

13-(Mining – Agriculture) is the process of digging into the earth to find materials like gold, coal, and iron.

B) Put (✓) or (×):

1-Cargo ship is for carrying people. ()

2- We use anemometer to measure the wind speed. ()

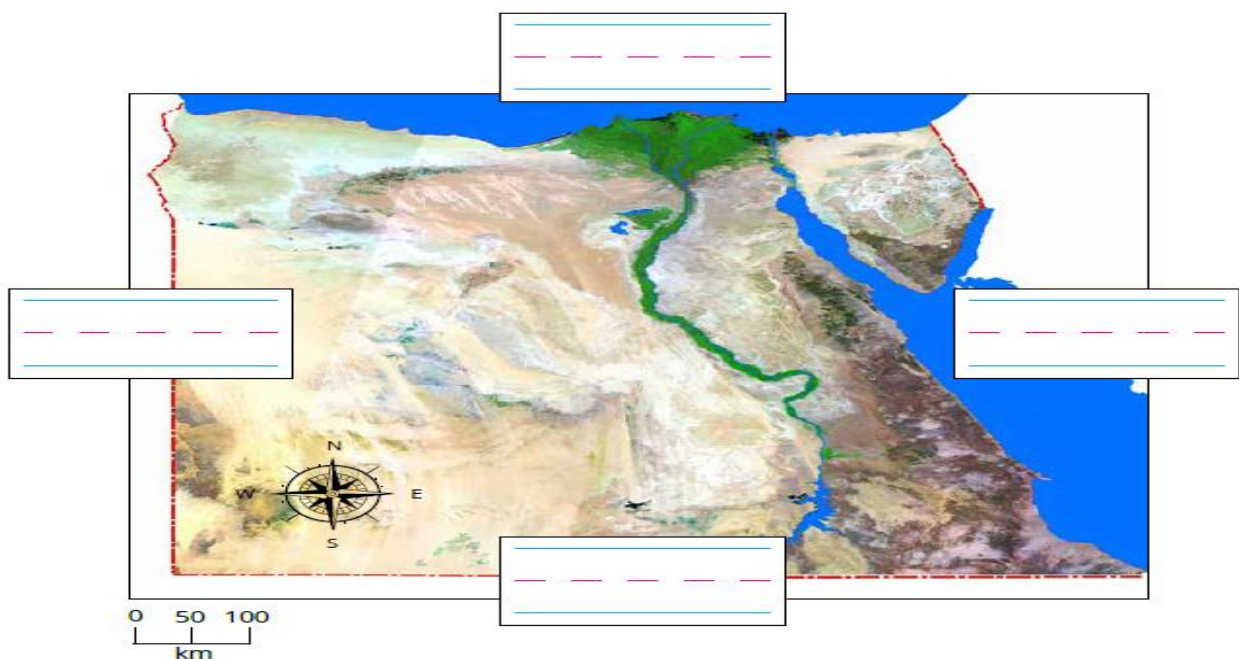
3- The different colors on the map are for decorations. ()

4- The yellow color on the map stands for water.()

- 5- The legend of the map is the key that helps us understand the meaning of colors and symbols. ()
- 6- Geography affects people. ()
- 7- The flight attendant takes the tickets. ()
- 8- The pilot flies the airplanes. ()
- 9- The mechanic fixes the buses, cars, and trains.()
- 10-The railroad engineer drives the bus. ()
- 11-Supermarkets and clothes shop sell goods. ()
- 12- Cotton is a very important crop grown in Egypt. ()

C) Complete:

North - South – East - West



Key answer

A) 1- wind. 2- wind. 3- water. 4- Geography.

5- Tourism. 6- natural. 7- fast.

8- scale. 9- Steel. 10- Aswan.

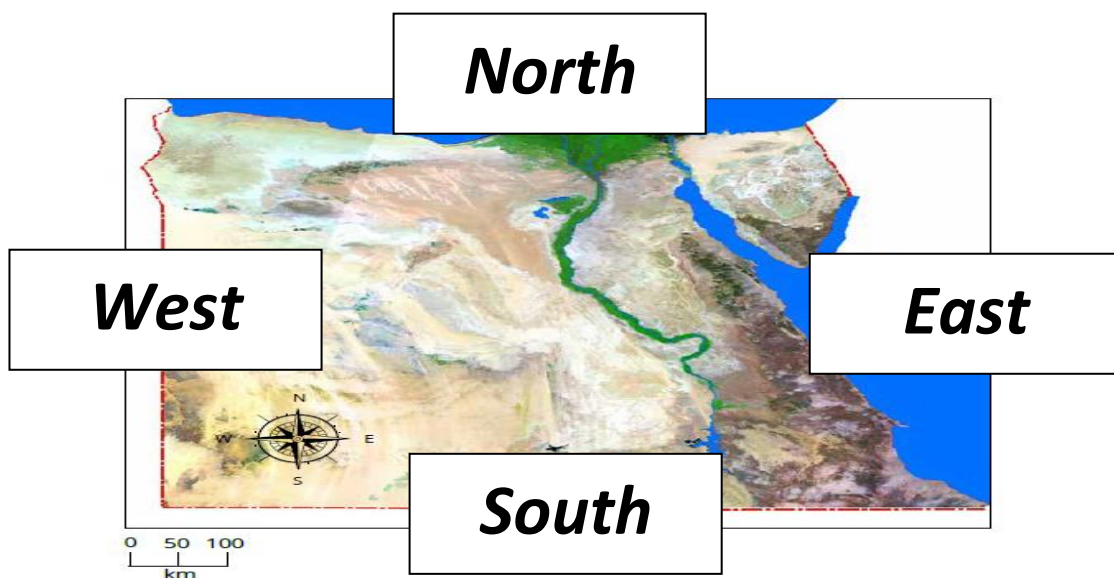
11- Alexandria. 12- unique. 13- Mining.

B) 1- (×) 2- (√) 3- (×) 4- (×)

5- (√) 6- (√) 7- (×) 8- (√)

9- (√) 10- (×) 11- (√) 12- (√)

C)



Wind erosion video

<https://www.youtube.com/watch?v=Prh7y8sN-g8>

Water erosion video

<https://www.youtube.com/watch?v=qqsTS67BKmA>

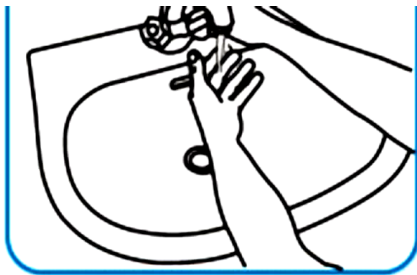
Cardinal directions song:

https://www.youtube.com/watch?v=f2I81_BFb-s

Egypt country song:

<https://www.youtube.com/watch?v=6s9i0wfGt-M>

The right way of washing hands:



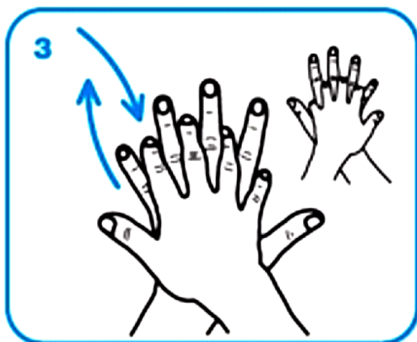
Wet hands with water



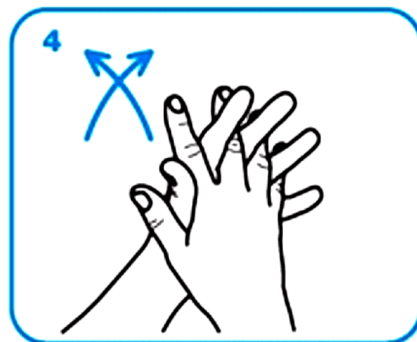
apply enough soap to cover all hand surfaces.



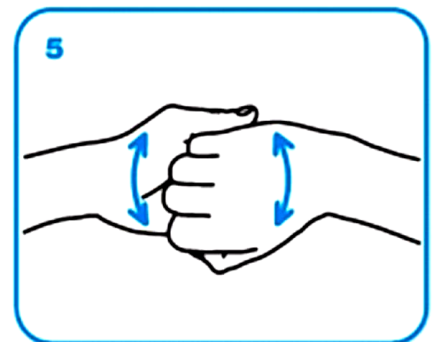
Rub hands palm to palm



right palm over left dorsum
with interlaced fingers



palm to palm with fingers
interlaced



backs of fingers to opposing
palms with fingers interlocked

***Our dear students, we call
you “Our kids” because in
our year together you aren’t
just kids on our class lists,
you become a part of our***

HEARTS

